

Faecal Immunochemical Testing (FIT)

Information for Treatment Room staff handing over a FIT sample collection device to patients

Step 1: BIOCHEMISTRY FORM

- ✓ Get a biochemistry request form (this may look different depending on Trust area)
- ✓ Stick an addressograph on the form.
- ✓ Fill in the practice code.
- ✓ Fill in the test request as QFIT

IMPORTANT: DO NOT FILL IN THE SAMPLE DATE BOX

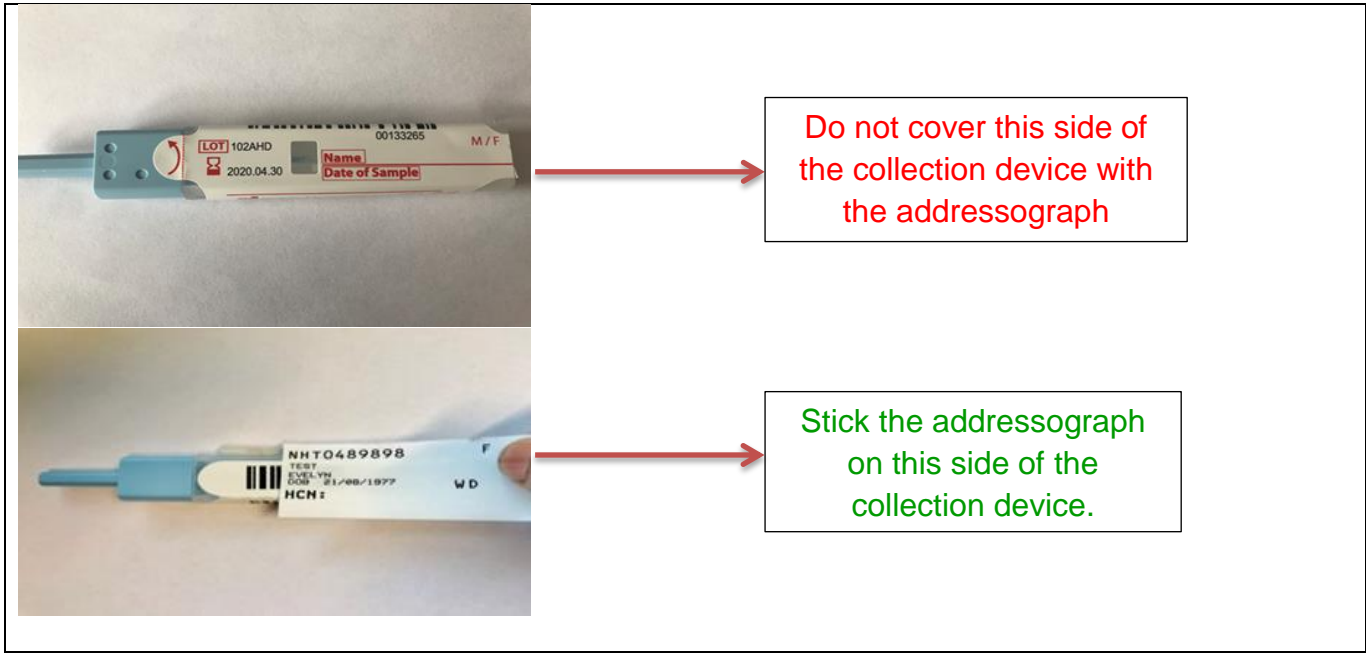
This is a biochemistry request form from HSC and Social Care Trust. It includes fields for patient details, clinical indication, and test requests. The 'QFIT' test is specifically requested. There are four colored boxes for tube types: GEL TUBE (orange), EDTA TUBE (purple), FLUORIDE TUBE (green), and a section for 'Some esoteric tests require a red top tube - see handbook' (pink). The 'QFIT' test is marked in the 'OTHER (specify)' box.

This is a blood sciences request form from Belfast HSC Trust Laboratories. It includes fields for patient details, specimen information, and test requests. The 'QFIT' test is specifically requested. There are several sections for test requests: CLINICAL BIOCHEMISTRY, IMMUNOPROTEINS, HAEMATOLOGY, and OTHER TESTS. The 'QFIT' test is marked in the 'OTHER TESTS' section.

Step 2: COLLECTION DEVICE

- ✓ Stick another addressograph on the collection device.
- ✓ Ensure this addressograph sticker does not cover the window on the collection device or the space provided for the patient's name/date of sample.

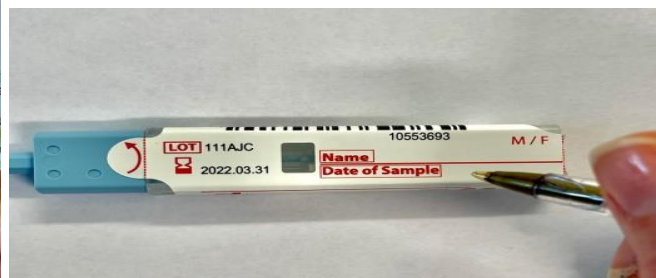
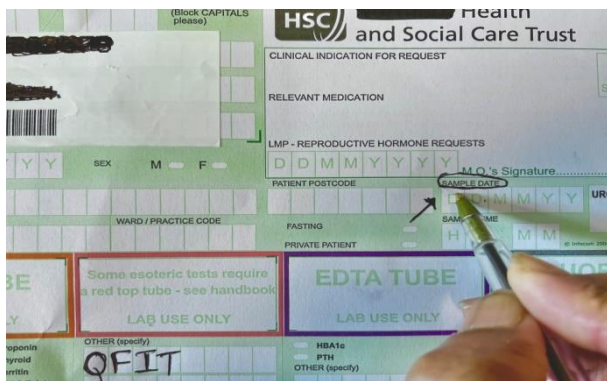
IMPORTANT: DO NOT FILL IN THE DATE ON THE COLLECTION DEVICE



Step 3: GIVE THE PATIENT

- ✓ The collection device
- ✓ The completed biochemistry form
- ✓ A patient instruction leaflet and explain to the patient how to collect the faeces sample

Instruct the patient to **FILL IN THE DATE** of the sample collection on both the biochemistry form **and** the collection device **when collecting** the faeces sample.



Step 4: EMPHASISE TO THE PATIENT

- ✓ If there are no dates on the request form and collection device, the test will be **rejected** by the laboratory.
- ✓ That it is important to return the collection device and sample within a few days and within 1 working day of collecting the faeces sample.
- ✓ To contact the practice for results and further management after 7 days of returning the sample.

Step 5: ON RECEIPT OF SAMPLE

- ✓ When the sample is returned to the practice please ensure the patient has inserted the completion date on the biochemistry form as shown above.
- ✓ Forward the sample to your local biochemistry laboratory as usual.